



Bořek Šípek is a world-wide known architect, designer, visionary, cosmopolitan, self-made man, and we could use many other characteristics at this place. However, according to his colleagues and friends, Bořek Šípek is especially a good man with a great personality.

The life of Bořek Šípek is a typical story about big world self-made men. He is often compared to a male Cinderella. At the age of fifteen, he became an orphan (both mother and father died of cancer). At nineteen, having nothing, he emigrated to Germany. Before emigrating he had graduated from an applied arts secondary school in Prague in the field of furniture construction. And

he really made use of his studies. Before entering the university in Germany, he worked as a cabinetmaker. Thanks to the scholarship, he graduated from architecture in Hamburg and philosophy in Stuttgart. He taught design at universities in Hannover, Essen and then in Prague for many years. From 2005 he is the Dean of the Faculty of Architecture at the Technical University in Liberec, Czech Republic.

Šípek's first significant success was a glass house that he had built for his sister, for which he was awarded the German Architecture Prize in 1984. The world opened up for him and he moved to Amsterdam because he was attracted to the liberal atmosphere of this cosmopolitan city. In the middle of eighties he was contacted by the most prestigious Italian design company *Driade*. Cooperation with *Driade* was the beginning of the skyrocketing career of „the most distinguished contemporary designer“ who „evokes the longing for magic in this horrid realistic world“. *Driade* published his new catalogue where Šípek's work was on offer, which proved his importance to the company. At that time, only four people had their own catalogue – French Philippe Starck, Spanish Oscar Tusquets, Italian Antonia Astori, and Czech Bořek Šípek. Also thanks to the name *Driade*, people became more interested in his work and orders from other known and unknown firms soon came in. The Netherlands was struck by the Šípek-mania a Šípek started to aim at exclusive products produced in small quantities; he especially like to design chairs



BOŘEK ŠÍPEK

or other pieces of furniture, cutlery, glass, china, vases or lamps and other home accessories. And thanks to *Driade*, Šípek was also able to explore Asia and his own passion for Asian culture and eastern thinking in general.

However, Bořek Šípek has always felt like an architect more than a designer. It remained so until today. He has a simple explanation for it: design consists of packing things into a form and he does not pack. Architecture is a space creation for him and design was earlier a natural part of architecture. Architects, according to Bořek Šípek, forget how powerful they are. „Architecture has the power to manipulate people positively. When I produce an

object, I am interested in how it will influence people. Architecture has such a power, much more than any other art. Architects can play with people, guiding them through the house as they need. Different rooms and places have different characters and people have different feelings in them. When we enter a theatre, we should have a different feeling than when we enter a bedroom or an office.”

As regards contemporary architecture, Šípek says: „When architecture is based on tradition, when it comes from it, even a simple man understands it. I try to interpret new contexts in a new way. It is much closer to me to newly explain something that has roots than to experiment. Tradition has always been a greater inspiration for me than experimentation. During the Renaissance, it was said that in front of a church, there must be at least four steps. You can learn a lot from this because going upstairs means nobleness. The architect and the solution he chooses make the difference. When I draw stairs in front of the building, it means that people will enter the building with a different feeling than when they enter it directly. I can let them enter quickly or slowly...” The main reason of his success in the field of architecture and design is hidden in the following sentence: „If you cannot start again and again, you end up in a routine. I like being unrestricted. The only restrictions that I welcome and that stimulate me are within the borders of the given order. I come out of it and I submit to it. My first two emigrations taught me his.”

ANDY

Šipek Illumination 2012



Wall lamp - Green glass woven with coloured glass flowers purple and yellow
height 32 cm, width 27 cm
2 kg, 40 watt, E27

ANNA PAVLOVNA

Šipek Illumination 2012



Chandelier - Metal frame with wavy crystal cones, each decorated with colored glass filigries - orange, pink, white, blue, green and yellow
height 100 cm, diam. 115 cm
80 kg, 40x20 watt, E14

ANNA PAVLOVNA

Šípek Illumination 2012



Chandelier - Metal frame with way blue cones
height 100 cm, diam. 115 cm
80 kg, 40x20 watt, E14

ARABESKA

Šipek Illumination 2012



Chandelier - Clear and multi-coloured glass
height 20 cm, diam. 35 cm
7 kg, 35 watt, E14

ARCIMBOLDO

Šipek Illumination 2012



Chandelier - Metal frame with glass vegetables
height 80 cm, diam. 90 cm
80 kg, 100 watt, E27

ARZENAL

Šipek Illumination 2012



Chandelier - Blue glass ball with crystal flower attachments
height 55 cm, diam. 55 cm
30 kg, 100 watt, E27

BOURGEON

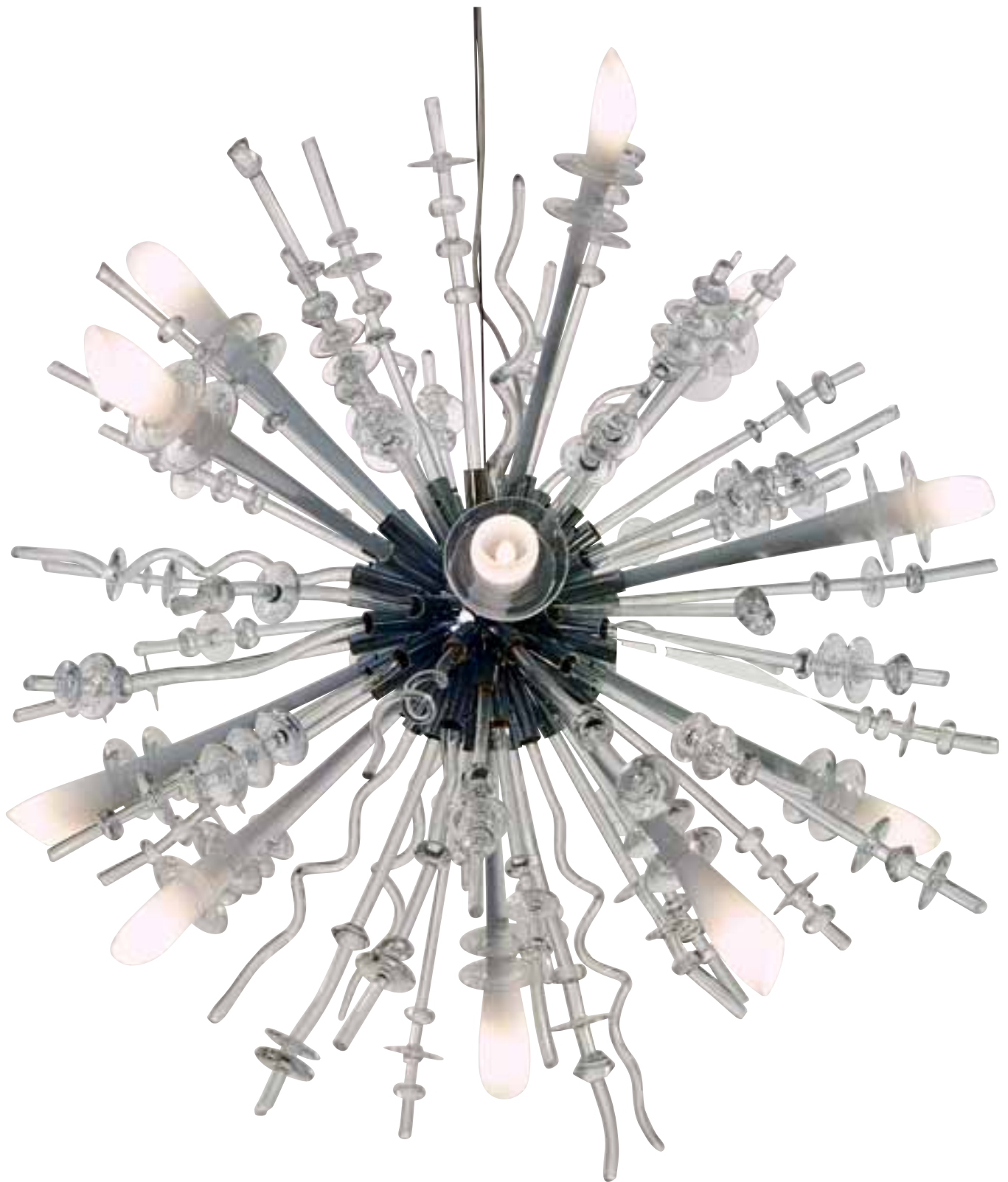
Šipek Illumination 2012



Wall lamp - Blue and white glass, metal construction and ceramic bulb holder
height 15 cm, diam. 12 cm
2 kg, 35 watt, E14

BRIONI

Šipek Illumination 2012



Chandelier - Black silicon ball with glass lights coming out.
height 100 cm, diam. 100 cm
80 kg, 12 x 20 watt, E14

DAVID

Šipek Illumination 2012



Chandelier - Clear and blue glass, brass and metal construction
height 40 cm, diam. 30 cm
5 kg, 50 watt, E14

DISASTER

Šipek Illumination 2012



Wall lamp - Crystal leaves woven into a cone
height 33 cm, width 28 cm
2,5 kg, 40 watt, E27

DISTEL

Šipek Illumination 2012



Chandelier - Round metal frame with golden attachments
from which come coloured glass leaves, from green to crystal
height 80 cm, diam. 80 cm
70 kg, 60 watt, E27

EINHOORN

Šípek Illumination 2012



Wall lamp - Crystal woven glass with crystal spikes covering shell
height 20 cm, diam. 35 cm
2,5 kg, 40 watt, E27

IVOŠ

Šípek Illumination 2012



Chandelier - White, red and clear glass, brass and metal construction
height 53 cm, diam. 90 cm
12 kg, 40 watt, E14

JIŘÍ

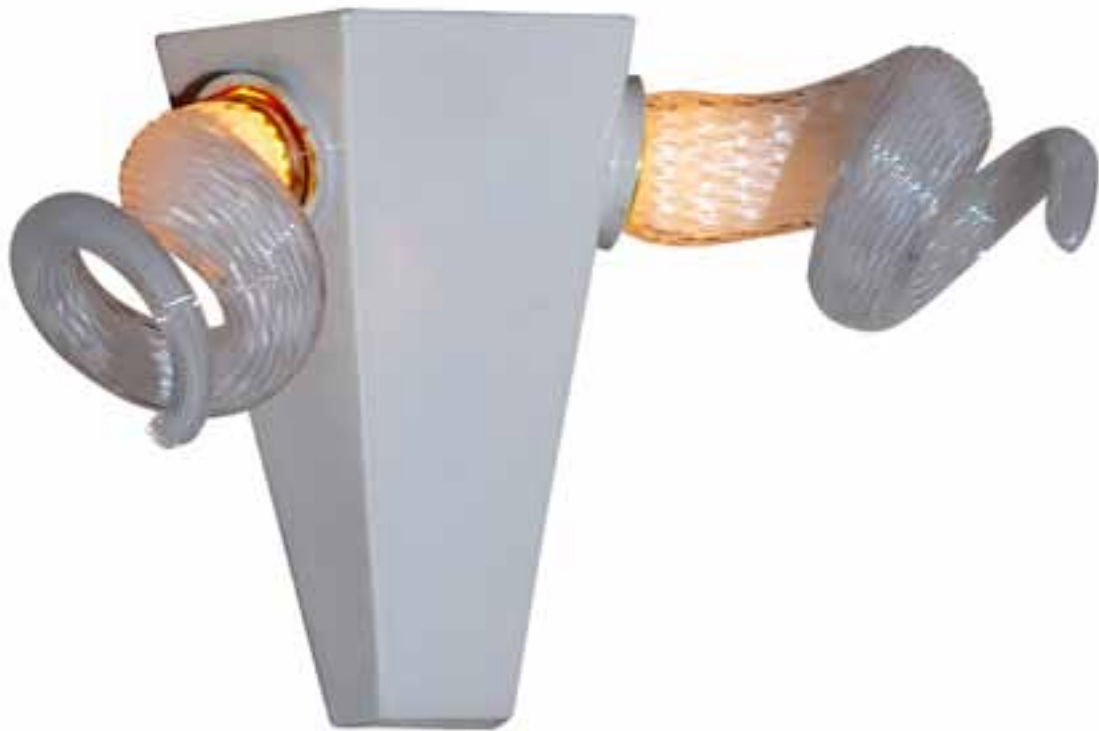
Šípek Illumination 2012



Chandelier - White and clear glass, brass and metal construction
height 50 cm, diam. 80 cm
10 kg, 50 watt, E14

KENTAUR

Šipek Illumination 2012



Wall lamp - Porcelain body with crystal horns on the sides
height 20 cm, diam. 35 cm
3,5 kg, 40 watt, E27

KIBUVITSA

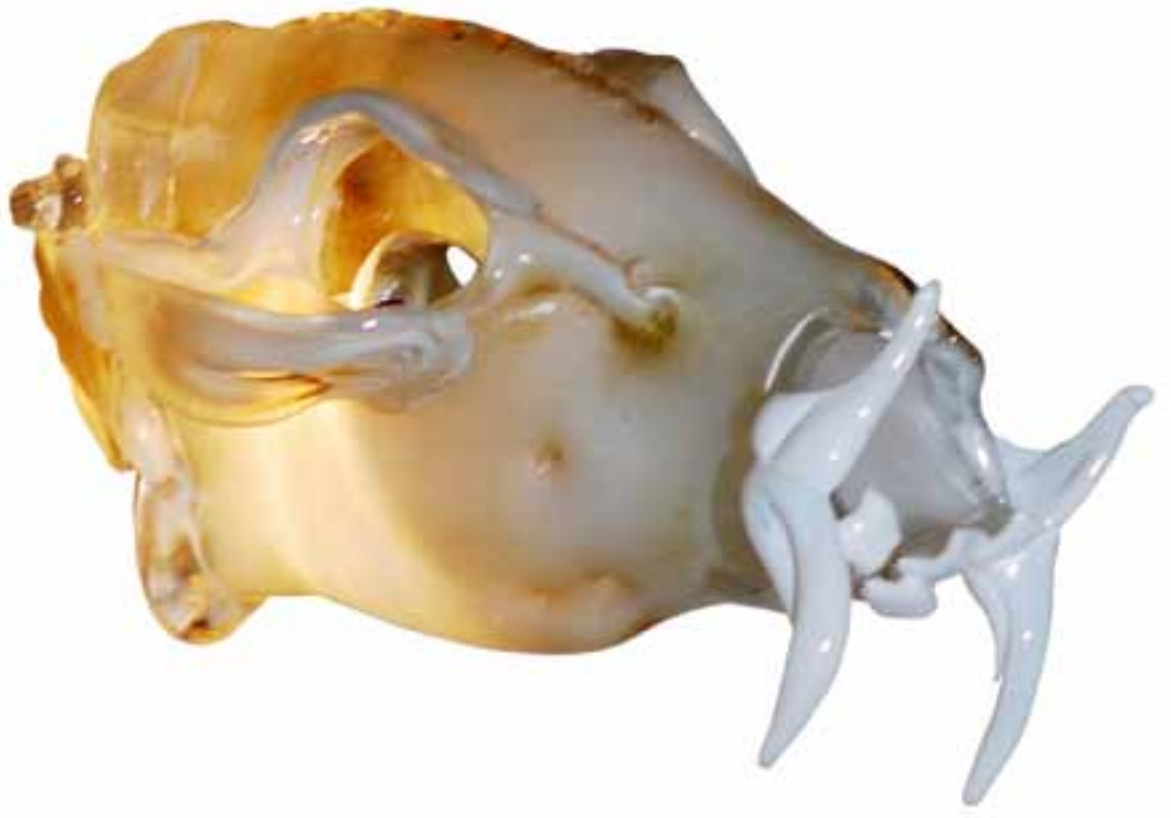
Šipek Illumination 2012



Wall lamp - Milky crystal glass lamp with two twisted horns from gold crystal - head of a ram
height 38 cm, width 33 cm
3,3 kg, 40 watt, E27

KNOSOS

Šipek Illumination 2012



Wall lamp - Powder covered glass head of a boar with white glass teeth
height 20 cm, width 30 cm
4 kg, 40 watt, E27

MODRÁ

Šípek Illumination 2012



Wall lamp - White and blue glass, metal construction and ceramic bulb holder
height 25 cm, diam. 15 cm
2,5 kg, 50 watt, E14

MUŠLE

Šípek Illumination 2012



Wall lamp - White and clear glass, metal construction
height 30 cm, diam. 25 cm
4 kg, 50 watt, E14

OBLAKA

Šipek Illumination 2012



Chandelier - Five cloud shaped white glass lamps
height 30 cm, diam. 100 cm
15 kg, 50 watt, E14

PIVOŇKA

Šipek Illumination 2012



Chandelier - Clear glass, brass and metal construction
height 30 cm, diam. 30 cm
4,5 kg, 35 watt, E14

PLUSMINUS

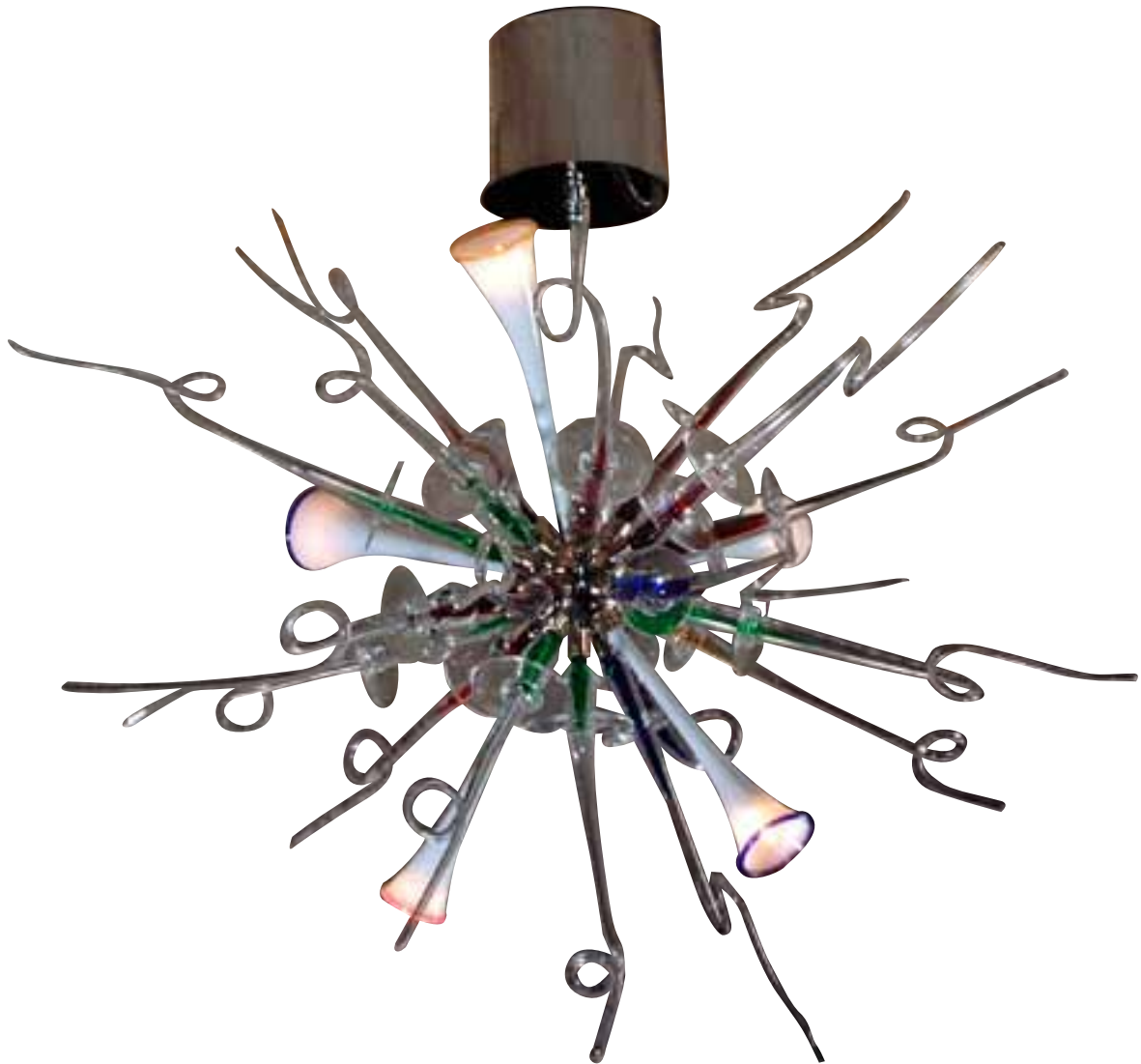
Šipek Illumination 2012



Chandelier - White glass balls with black leaves coming from in between
height 30 cm, diam. 50 cm
10 kg, 60 watt, E27

SLUNCE MALÉ

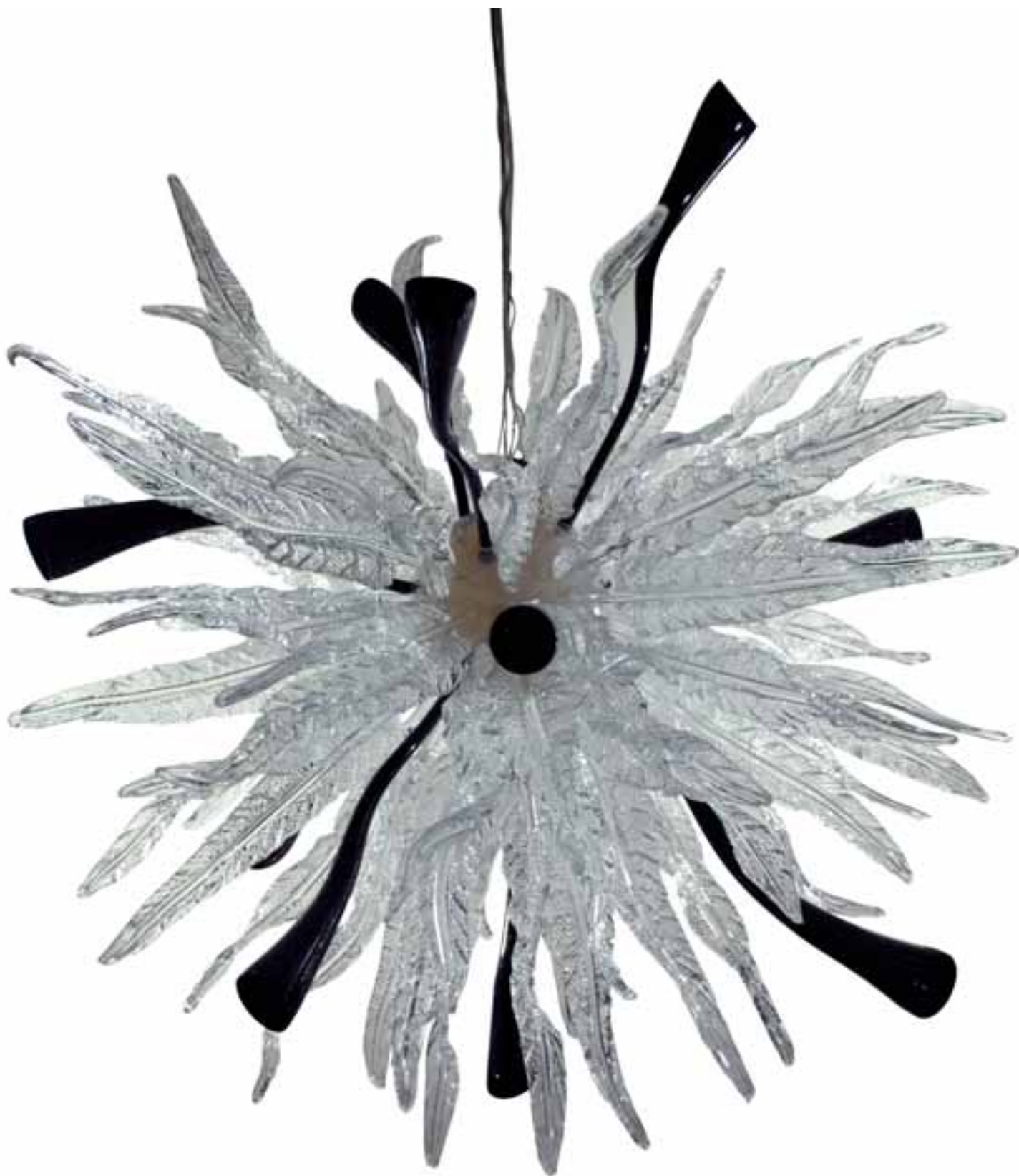
Šípek Illumination 2012



Chandelier - Metal construction with glass crystal leaves and light.
Slightly decorated with coloured attachments
height 60 cm, diam. 60 cm
15 kg, 5 x 20 watt, E27

SLUNCE WHITE

Šípek Illumination 2012



Chandelier - Silicon ball with crystal leaves and black glass lights
height 120 cm, diam. 120 cm
60 kg, halogen, 10x10 watt

SLUNCE BLACK

Šípek Illumination 2012



Chandelier - Silicon ball with black leaves and white glass lights
height 120 cm, diam. 120 cm
60 kg, halogen, 10x10 watt

SLUNCE

Šípek Illumination 2012



Chandelier - Metal construction with glass crystal leaves and light.

Slightly decorated with coloured attachments

height 100 cm, diam. 100 cm

80 kg, halogen, 8x20 watt

UZEL

Šípek Illumination 2012



Chandelier - White and blue glass, brass and metal construction
height 65 cm, diam. 40 cm
6 kg, 40 watt, E14



LOCAL DEALERS

CZECH REPUBLIC

Simona Vávrová
Bořek Šípek Design Lounge
Sněmovní 174/7
118 00 Praha 1
Czech Republic
Tel.: +420 777 102 639
E-mail: simona.vavrova@sipekteam.eu

FRANCE

Bertrand Courtaigne
HIP galerie d'art
8 rue Saint Roch
75001 Paris
France
Tel.: +33 (0)6 80 01 32 21
E-mail: bertrand-hip@orange.fr

GERMANY

CLAUTRÓ Lifestyle
Tattenbachstr. 20
D- 80538 München
Germany
Tel.: +49 (089) 29 79 84
E-mail: ct@claudiatrossen.de
Web: www.clautro.de

AUSTRIA

Mgr. Věra Gastberger
Neudorferstrasse 60-62/8/II
A- 3240 Mödling
Austria
Tel.: +43 0660 7323093
E-mail: veragastberger@yahoo.com

GREECE

Vitra Showroom Athens
EL.GR SA
220 Kifisias Ave.
152 31 Halandri
Greece
Tel.: +30 210 67 46 601
Fax: +30 210 67 28 685
E-mail: elgr-ag@otenet.gr
www.vitra.com

RUSSIA

GG "Gala Gallery" by Bořek Šípek
Artplay Na Jauze - Centrum Dizajna
Moskva
Nizhnjaja Syromjatnitcheskaja 10
Moscow
Russia
Tel.: +8-499-500-24-96
Mobil: +8-926-905-52-51
E-mail: gala-gallery@yandex.ru

CYPRUS

Elgreco Gallery Ltd.
87-91 Limassol Avenue
2121 Nicosia
Cyprus
Tel.: +357 22 314332, 22 454 742
Fax: +357 22 429 379
E-mail: elgreco@spidemet.com.cy
www.elgreco-gallery.com

Elgreco Gallery Ltd.

49, Promachon Eleftherias Str,
4103 Limassol
Cyprus
Tel.: +357 25 430 026
Fax: +357 25 430 028

U.S.A. - East Coast

Katerina Baglio
New York
Tel.: +1-516-526-9519
E-mail: katerina.baglio@sipekteam.eu

U.S.A. - West Coast

Servane Dumon
San Francisco
Tel.: +1 (415) 613 9153
E-mail: servanedumon@gmail.com

U.S.A. - California

Michael Ruvo
Servane
Cell: +1 213.605.1805
Fax: +1 760.328.5161
E-mail: ruvoreps@aol.com

JAPAN

Takeshi Hasegawa
Kobe Business Support Agency
5-533-412, Naka-5-Chome
Koyo-Cho, Higashinada-Ku
Kobe, 658-0032
Japan
Tel. and Fax: 81+78-857-5591
Mobil: 81+90-7101-4820
E-mail: ted-hase@leto.eonet.ne.jp

CHINA - Shanghai & Gunagzhou Power Link Corporation Limited Mrs. Lily Tian Charvat

No. 15B/F 30 Ju Bao Xuan, Li Ya
Yuan Bei Qu, Nanhai Da Dao Bei,
Guicheng
District, 528200 Nanhai City, Foshan,
Guangdong,
China
Tel.: +86 1867 658 9600
E-mail: powerlink@vip.sina.com

CHINA - Peking & Central China Ladislav Jač

Tel.: +420 734 257 538
E-mail: jac@ljac.cz





www.boreksipek.com